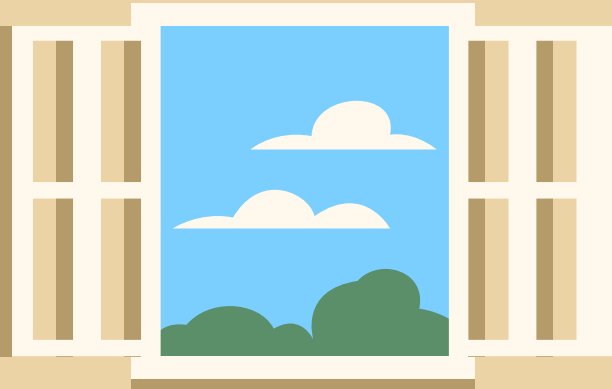


Daily Covid Checklist for students

- ✓ Before school, screen yourself for COVID-19 symptoms
- ✓ Pack an extra mask in a sealed container/bag
- ✓ Pack only what you need and can carry in your backpack
- ✓ Practice physical distancing
- ✓ Use hand sanitizer and wash your hands regularly
- ✓ No sharing with others (e.g. food, drinks)
- ✓ Put any reusable masks in the laundry when you get home



- Per the School District of Philadelphia, all students, staff, and anyone inside schools or on school grounds are required to wear a mask, regardless of vaccination status.
- Please provide a reusable water bottle each day, as water fountains are closed.



Daily Checklist for school!

- Chromebooks should be fully charged each day
- All homework should be completed and ready to turn in on time
- Sneakers and gym uniforms on for gym days



- A student's success begins with preparation!
- Please ensure your child is ready for the next school day by speaking to them about their day and have everything ready the night before.



School Uniforms

- Dark navy blue polo shirt and khaki bottoms.
- Closed toe footwear. (sneakers, shoes, etc. No sandals, flip flops, etc.)

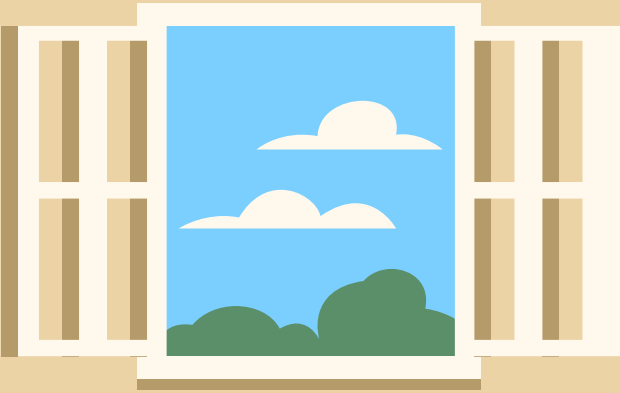





Hours:

Full Day - 8:15 to 2:54

Half Day - 8:15 to 11:54



An illustration of a classroom. On the left, a greenboard with a brown border contains the text 'Where do I line up when I arrive at school?'. Above the greenboard is a round clock with a red face and black hands. To the right of the clock is a speaker icon. Further right is a bulletin board with four colored squares: red, orange, brown, and green. In the foreground, there are two desks with red tops and blue legs, each with a red chair. On the desks are stacks of books. In the background, there is a door with two vertical windows and a wall with some yellow rectangular shapes.

**Where do I line up
when I arrive at
school?**

**Go to the back of the school
from Tomlinson Road near the
playground and line up at your
classroom # with your class!**

Arrival Doors



Grade	Room numbers	Where to line up in the morning & pick up in the afternoon
Pre-K	A1, A2	Door 3
K	A-3, A-4, B-1	Door 4
K	B-2, B-3, B-4	Door 5
1st	100, 107, B-6, B-7, B-8, B-9	Between doors 6 & 7
2nd	105, 200, 201, 202, 204, 207	Between doors 6 & 7
3rd	109, 208, 209, 210, 211, 212	Between doors 7 & 8
4th	110, 216, 218, 221, 222, 224	Between doors 9 & 10
5th	111, 219, 220, 223	Between doors 10 & 11
K-5	B-5, 112, 206, 214, 215, 217	Between doors 8 & 9



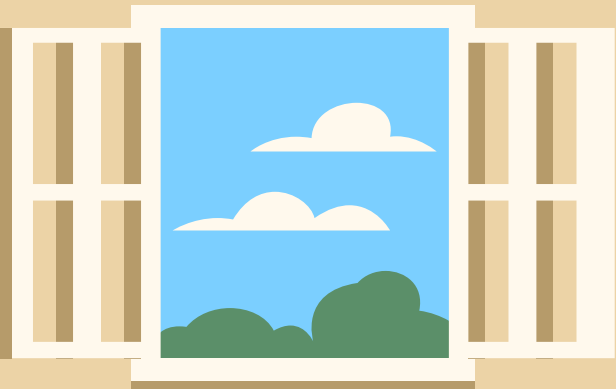
What happens if it's raining, snowing or really cold?

*Doors only open at 8:05am regardless of the weather!

*This is to ensure your child is safe with adequate staff available.

*Grades K-1 and rooms 107, 109, 110 and 111 enter through auditorium doors or door 8.

*Grades 2-5 enter through the cafeteria doors.



FREE BREAKFAST

FOR ALL STUDENTS, EVERY DAY!

Did you know that your school offers all students a free breakfast each day?
Help make sure students are ready to learn by starting the day with school breakfast!

Before school 7:45 to 8:10am in
the cafeteria!



WHY EAT SCHOOL BREAKFAST?



Increased Productivity

School breakfast is linked to better attendance rates, improved behavior, decreased tardiness and better memory and comprehension.



Better Health

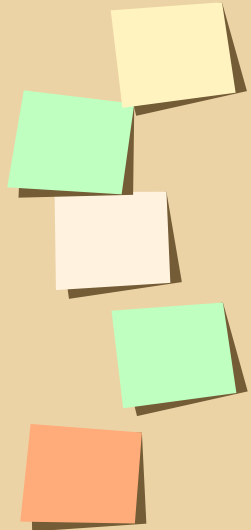
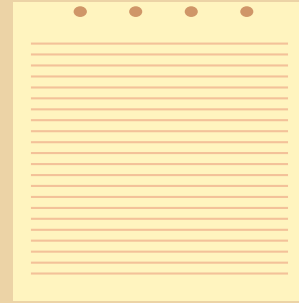
School breakfast can help protect against obesity and other negative health outcomes. It can also stop hunger-related stomach aches and headaches.

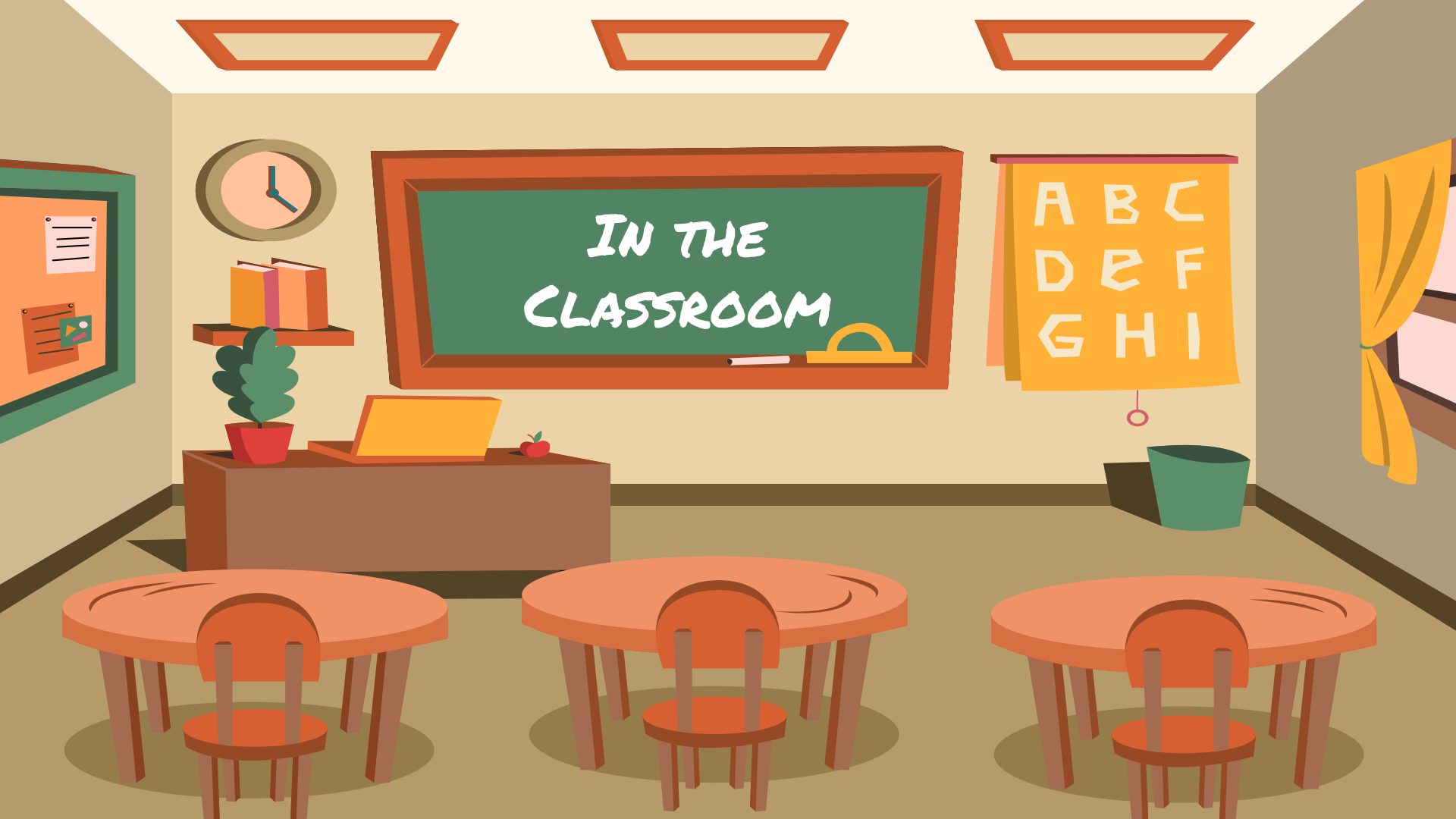


Easier Mornings

Eating free school breakfast helps save money and gives families one less thing to worry about in the morning.

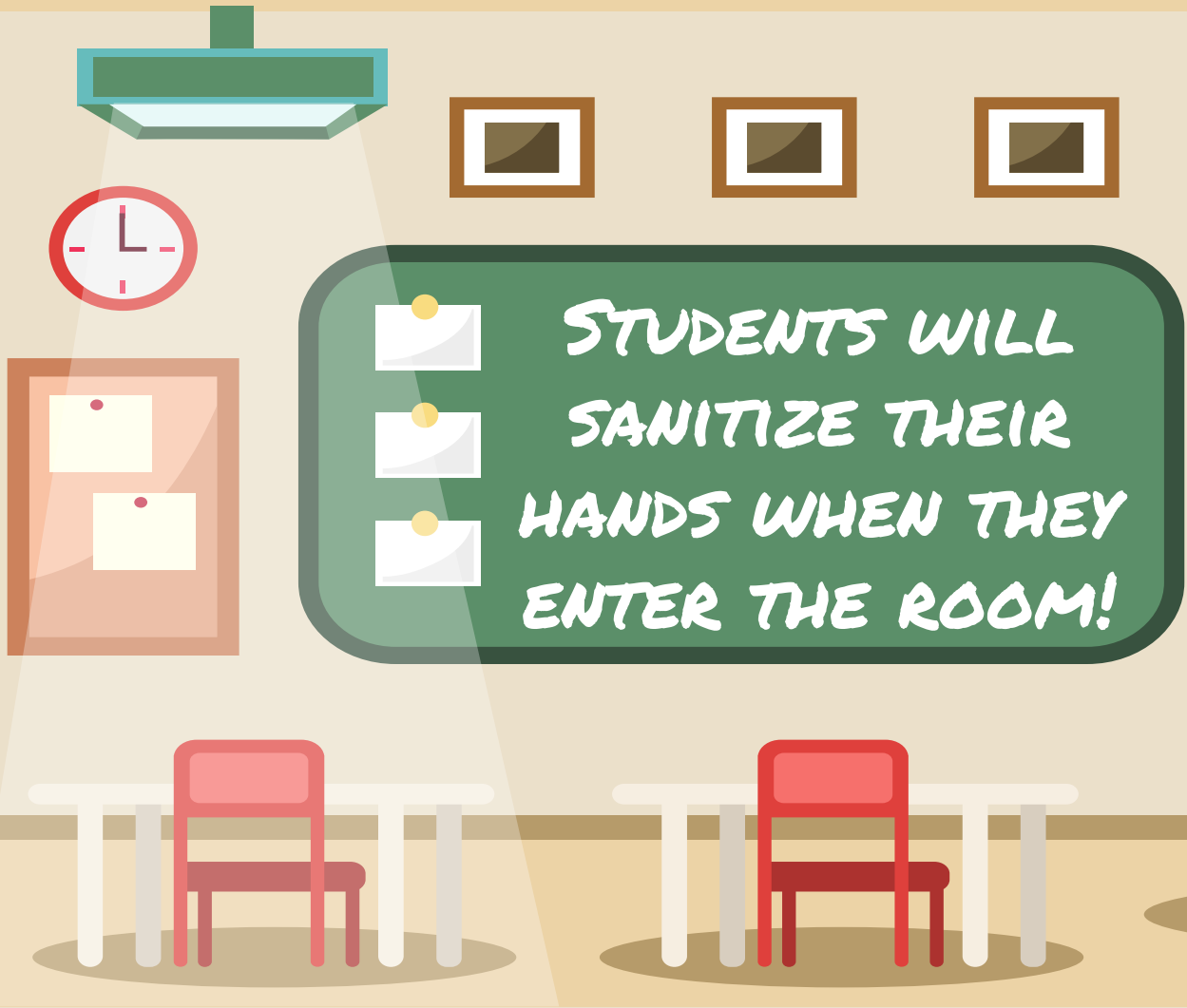
PRACTICE SOCIAL DISTANCING!



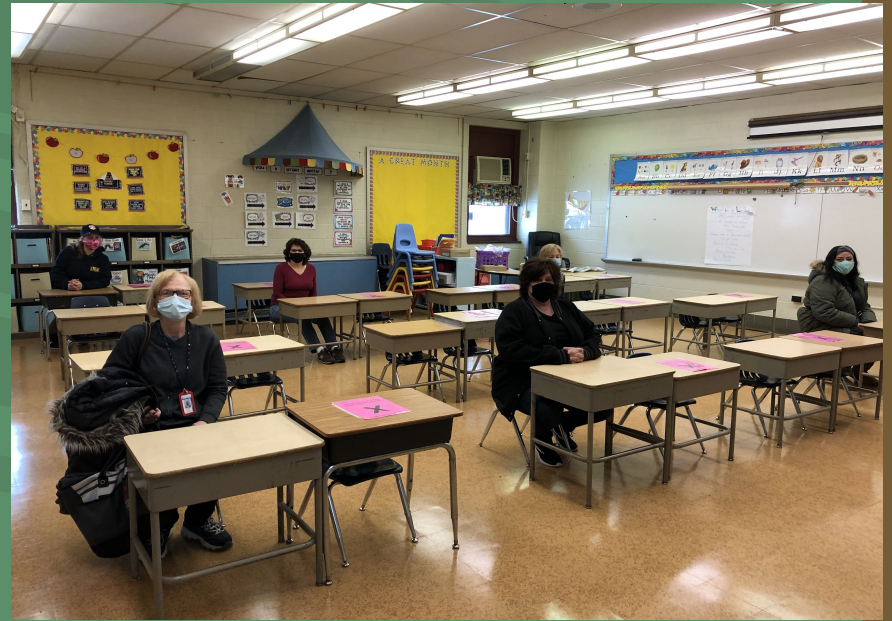


IN THE
CLASSROOM

A B C
D E F
G H I



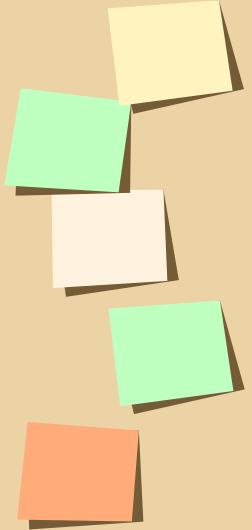
STUDENTS ARE SPACED 3 FEET APART





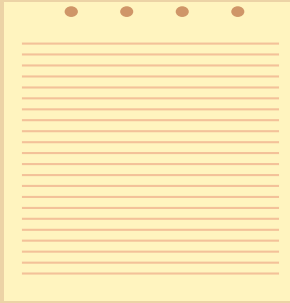
LUNCH WILL BE EATEN IN
THE CAFETERIA.

STUDENTS MAY TAKE A FREE
LUNCH FROM THE CAFETERIA
OR
BRING A LUNCH FROM HOME



RECESS WILL BE OUTSIDE OR IN
THE CAFETERIA BASED ON
WEATHER.

PLEASE SEND IN A COLORING
BOOK, ACTIVITY BOOK, OR A
BOOK TO READ FOR INDOOR
RECESS.





STUDENTS WILL NEED A
WATER BOTTLE EACH
DAY.



Dismissal Doors



**REMEMBER YOUR PHOTO ID
WHEN PICKING UP
STUDENTS. NO STUDENT
WILL BE DISMISSED TO
ANYONE WITHOUT A VALID
PHOTO ID.**



**I.D.
REQUIRED**

When picking up your child:

Wait behind the line for the class to come outside.

Have your photo ID ready.

Teachers will dismiss one child at a time.

Kindergarten students will be lined up inside the building to dismiss.



Loesche Core Values

Respect

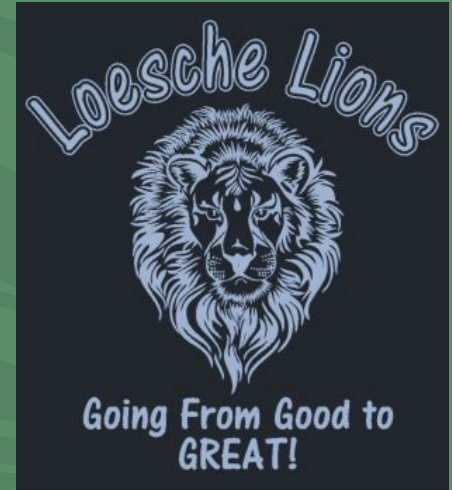
Responsibility

High Expectations

Inclusivity

Collaboration

Community



Questions?



Email School Staff



Leave a message
on the school phone line



#Loescheleaders